

## Hear and Learn UConnect SoundHouse & Mini Hearing Augmentation Systems

Set up and troubleshooting instructions for hearing aids and transmitters

**Audio in learning spaces – the PA from the office, audio from AV devices like computers and projectors, and the voices of teachers and students – is transmitted (not made louder) by radio frequency or bluetooth to receivers built into hearing aids.**

This process of transmission is called Hearing Augmentation.

These are supplied by our Federal Government (specifically Hearing Australia) to students, and worn by teachers and visitors that may have been purchased by themselves.

A challenge is that students are provided with different hearing aids and receivers, and receivers may be programmed differently. Further, the types of hearing aids and transmission methods may change.

The principle of UConnect SoundHouse and Mini is that transmitters to hearing aids (which may be different from one student to another) connect via cable to the UConnect SoundHouse and Mini, and then 'talk' to the receiver built into the hearing aid. Students may have their own transmitter, or not, or their own transmitter may not be charged or not working. Reception has a supply of transmitter(s) as a back up.

Manuals relevant to these transmitters are also at Reception.

While pairing a transmitter to a receiver in an aid is a technical process, it is relatively simple and easy to learn. Hearing aided students usually have an understanding of this. It may be that a teacher or visitor have different aids and receivers to students, and may have a receiving facility built in called Tswitch. Reception has neck loop receiver(s) for the teacher or visitor to wear, to receive transmission from the Phonak branded transmitter.



### Reception is responsible for keeping transmitter(s) and neck loop receiver(s) safe, clean and accessible.

If you have a Phonak transmitter it will need to be recharged as you would recharge your mobile phone. If you have a Signia Streamline TV transmitter which is not rechargeable it must be connected to a power supply which exists at the UConnect SoundHouse and Mini.

Technology built into hearing aids may change. The School will learn about changes via communication as part of HearAssist. It may be that the School has to procure next generation transmitter(s) and receiver(s) in the future.

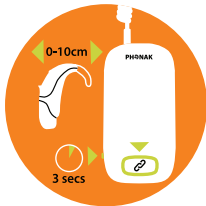
Student populations may change and it may be that additional transmitter(s) and receiver(s) need to be procured by the School to ensure all hearing aided students, teachers and visitors are provided with hearing augmentation.

## Set up and troubleshooting instructions for hearing aids and transmitters connected to the UConnect SoundHouse.

### PHONAK MULTIMEDIA HUB



**Got a Phonak 'Roger' receiver in your hearing aid?**



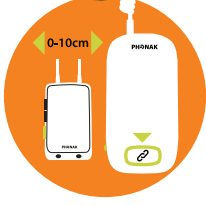
Turn on the precharged Phonak Multimedia Hub from Reception, or use your own, and pair to your aids.



Plug devoted audio cable in UConnect into Hub.



**Got a TSwitch in your hearing aid?**



Turn on the precharged Phonak Multimedia Hub from Reception and the precharged neck loop. Pair Hub to loop, and activate TSwitch in your aid.

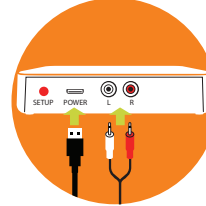


Plug devoted audio cable in UConnect into Hub.

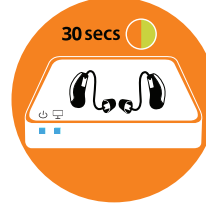
### SIGNIA STREAMLINE TV



**Got a Signia hearing aid with Bluetooth receiver?**



Connect Streamline TV from Reception, connect to power at UConnect SoundHouse, and connect to audio.

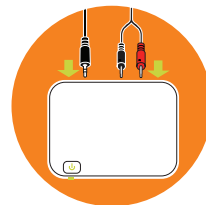


Pair your aids to Streamline TV. Turn the aids off and on again. Place both aids close to, or on top of the Streamline TV. The pairing process starts automatically.

### OTHER TRANSMITTER BRAND



**Got a different type of receiver in your aid?**



Use your own transmitter and connect to audio cable as appropriate. Discuss with your school about any unique needs.

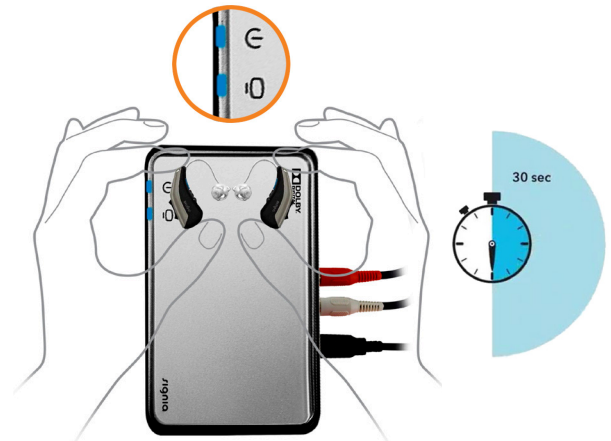
## Set up and troubleshooting instructions for hearing aids and transmitters connected to the UConnect SoundHouse.

### HOW TO PAIR & USE THE STREAMLINE TV

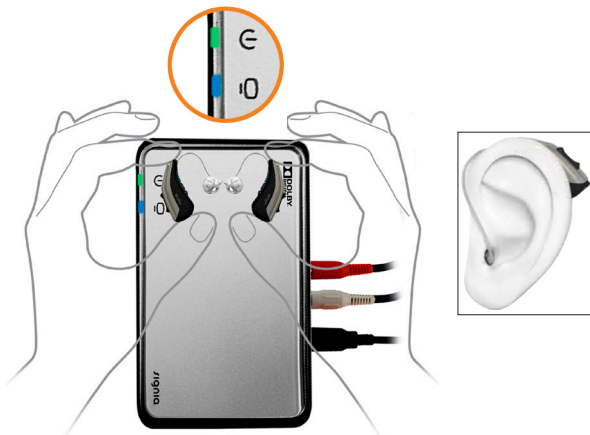
- 1 Turn the hearing aids off and on again. Open and close the battery compartments. If your hearing aids do not have a battery compartment, turn them on and off as described in the hearing aids' user guide



- 2 Hold both hearing aids close to the transmitter. The pairing process starts automatically. The LEDs will turn blue for 30 seconds, indicating that they're pairing.



- 3 Once pairing has been completed successfully, insert the hearing aids into your ears.



- 4 A medium press / hold / release of 1-3 seconds on the rocker switch of the hearing aids will initiate TV streaming.



- 5 If your audiologist gave you a TV programme, you can initiate streaming by switching to the TV programme using the Signia app, Mini Pocket remote control, and /or on-board user controls (e.g. rocker switch).

### Intuitive LED Display

Effortless handling: The intuitive LED display provides a clear overview of Streamline TV's connection status

**White power display:** Streamline TV is starting.



**Both displays flash blue:** Streamline TV is switched on but not paired with any hearing aids.



**Both displays turn blue for approx. 30 seconds:** Pairing is complete.



**Green power display and blue status display:** Streamline TV is connected to another electronic device (whether or not an audio signal is being transmitted)



**Red power display:** Streamline TV is switched on but not receiving an audio signal

