

How to Pair and Use The Streamline TV



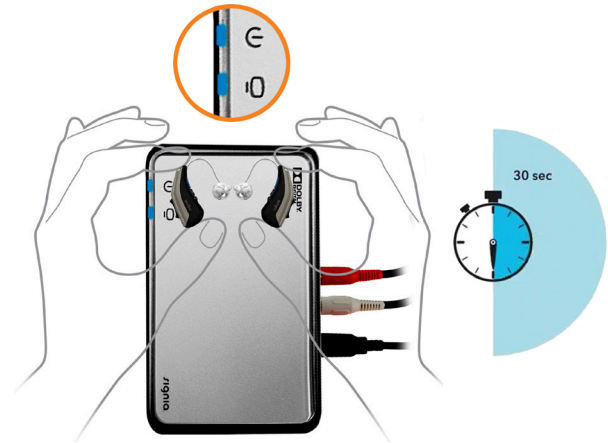
HEAR and LEARN
CLASSROOM SOUND ENHANCEMENT



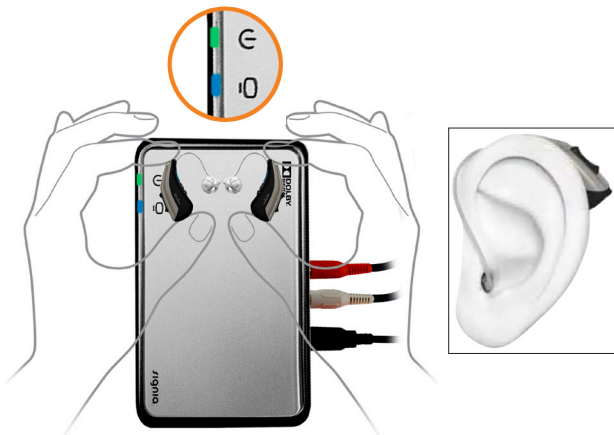
- 1 Turn the hearing aids off and on again. Open and close the battery compartments. If your hearing aids do not have a battery compartment, turn them on and off as described in the hearing aids' user guide



- 2 Hold both hearing aids close to the transmitter. The pairing process starts automatically. The LEDs will turn blue for 30 seconds, indicating that they're pairing.



- 3 Once pairing has been completed successfully, insert the hearing aids into your ears.



- 4 A medium press/hold/release of 1-3 seconds on the rocker switch of the hearing aids will initiate TV streaming.



- 5 If your audiologist gave you a TV programme, you can initiate streaming by switching to the TV programme using the Signia app, Mini Pocket remote control, and/or on-board user controls (e.g. rocker switch).

Intuitive LED Display

Effortless handling: The intuitive LED display provides a clear overview of Streamline TV's connection status

White power display: Streamline TV is starting.



Both displays flash blue: Streamline TV is switched on but not paired with any hearing aids.



Both displays turn blue for approx. 30 seconds: Pairing is complete.



Green power display and blue status display:

Streamline TV is connected to another electronic device (whether or not an audio signal is being transmitted)



Red power display: Streamline TV is switched on but not receiving an audio signal



Use Manuals provided for further help and/or contact manufacturer or regional hearing impairment advisor.