

Hear and Learn UConnect SoundHouse & Mini Hearing Augmentation Systems

Set up and troubleshooting instructions for hearing aids and transmitters

For help with operating devices involving a teacher Flexmike, see other help documents at hearandlearn.com.au/help and manuals at hearandlearn.com.au/soundfield-solutions

Audio in learning spaces – the PA from the office, audio from AV devices like computers and projectors, and the voices of teachers and students – is transmitted (not made louder) by radio frequency or bluetooth to receivers built into hearing aids.

THIS PROCESS OF TRANSMISSION IS CALLED HEARING AUGMENTATION.

These are supplied by our Federal Government (specifically Hearing Australia) to students, and worn by teachers and visitors that may have been purchased by themselves.

A challenge is that students are provided with different hearing aids and receivers, and receivers may be programmed differently. Further, the types of hearing aids and transmission methods may change.

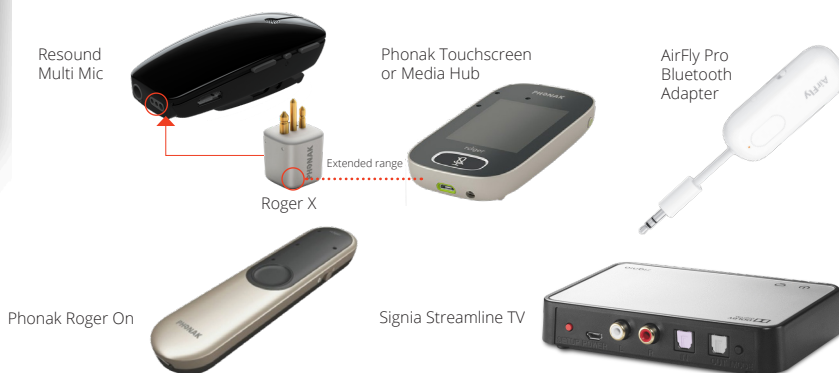
The principle of UConnect SoundHouse and Mini is that transmitters to hearing aids (which may be different from one student to another) connect via cable to the UConnect SoundHouse and Mini, and then 'talk' to the receiver built into the hearing aid. Students may have their own transmitter, or not, or their own transmitter may not be charged or not working. Reception has a supply of transmitter(s) as a back up.

MANUALS RELEVANT TO THESE TRANSMITTERS ARE ALSO AT RECEPTION.

While pairing a transmitter to a receiver in an aid is a technical process, it is relatively simple and easy to learn. Hearing aided students usually have an understanding of this. It may be that a teacher or visitor have different aids and receivers to students, and may have a receiving facility built in called Tswitch. Reception has neck loop receiver(s) for the teacher or visitor to wear, to receive transmission from the Phonak branded transmitter.



CONNECT TO ANY AID



RECEPTION IS RESPONSIBLE FOR KEEPING TRANSMITTER(S) AND NECK LOOP RECEIVER(S) SAFE, CLEAN AND ACCESSIBLE.

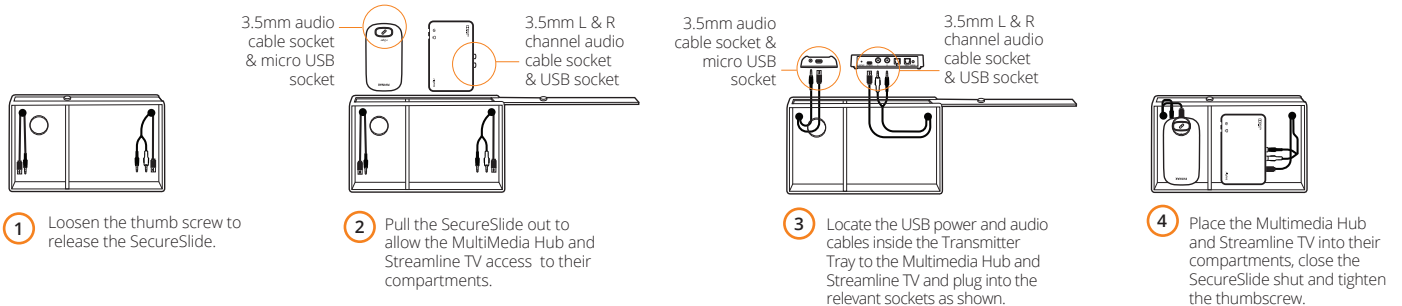
If you have a Phonak transmitter it will need to be recharged as you would recharge your mobile phone. If you have a Signia Streamline TV transmitter which is not rechargeable it must be connected to a power supply which exists at the UConnect SoundHouse and Mini.

Technology built into hearing aids may change. The School will learn about changes via communication as part of HearAssist. It may be that the School has to procure next generation transmitter(s) and receiver(s) in the future.

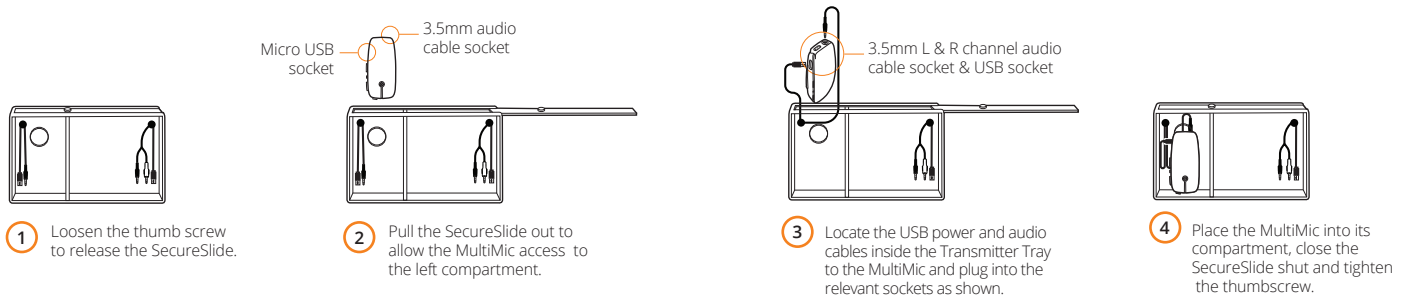
Student populations may change and it may be that additional transmitter(s) and receiver(s) need to be procured by the School to ensure all hearing aided students, teachers and visitors are provided with hearing augmentation.

Set up and troubleshooting instructions for hearing aids and transmitters connected to the UConnect SoundHouse.

CONNECTING YOUR MULTIMEDIA HUB AND STREAMLINE TV IN THE TRANSMITTER TRAY



CONNECTING YOUR RESOUND MULTI MIC IN THE TRANSMITTER TRAY



PHONAK MULTIMEDIA HUB



Got a Phonak 'Roger' receiver in your hearing aid?



Press the large connect button on the Multimedia Hub. Repeat connection for additional receivers.



Got a TSwitch in your hearing aid?



Switch your hearing aid/sound processor to the T-coil program. Hold Roger Neck Loop within 10 cm of the Hub. Press the large connect button on the Multimedia Hub. Repeat connection for additional receivers.

SIGNIA STREAMLINE TV



Got a Signia hearing aid with Bluetooth receiver?



Pair your aids to the Streamline TV. Turn the aids off and on again. Place both aids close to, or on top of the Streamline TV. The pairing process starts automatically.

RESOUND MULTI MIC



Got a ReSound Multi Mic receiver in your hearing aid?

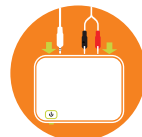


Press and hold the program button/toggle button on your hearing aid until you hear a melody. To check connection, tap on the Multi Mic, you should hear this in your hearing aid.

OTHER TRANSMITTER BRAND?



Got a different type of receiver in your aid?



Use your own transmitter and connect to audio cable as appropriate. Discuss with your school about any unique needs.

PHONAK

Set up and troubleshooting instructions for Phonak Hub

YOUR SCHOOL OWNS EXTRA PHONAK MULTIMEDIA HUBS AND ARE AT YOUR OFFICE/ADMIN AREA. THESE ARE CHARGEABLE DEVICES AND HAVE BEEN SUPPLIED WITH POWER SUPPLIES SO AS TO ENABLE PRECHARGING.

- For best operation, pre charge the Multimedia Hub before connecting it to cables within your UConnect SoundHouse or UConnect Mini. To switch on, press the On/Off button on the side of the Multimedia Hub for 3 seconds. The green indicator lights will flash until fully booted. The power indicator light will continue to fade in and out green during use.
- Connect to the USB cable in the TransmitterTray of the UConnect SoundHouse or UConnect Mini to the Multimedia Hub to charge and power it. Connect audio cable to augment classroom audio via the Hub.



- With the Learner/Listener's receiver within 10 cm's from the Multimedia Hub, press the large Connect button on the Multimedia Hub. Repeat connection for additional receivers.
- To switch off, press the On/Off button on the side of the Roger Multimedia Hub for 3 seconds. The indicator lights will flash green 3 times and then turn off.





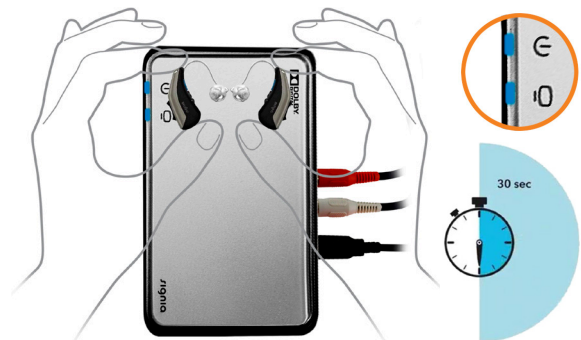
Set up and troubleshooting instructions for Signia receivers in aids

HOW TO PAIR & USE THE STREAMLINE TV

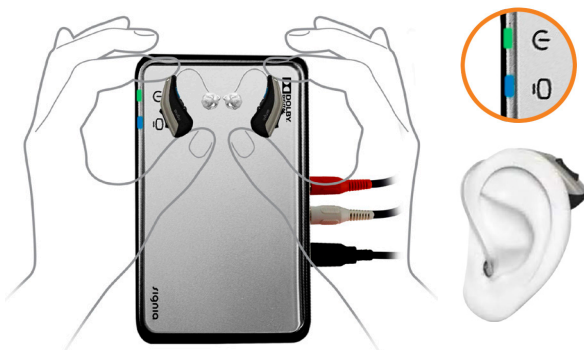
- 1 If your School is populated by secondary school aged Learners, it owns extra Signia Streamline TV devices which are stored at your Office/Admin area. These devices are not chargeable; to operate they need to be connected to the power supply cable in the black TransmitterTray on the front of the UConnect Mini or SoundHouse. Turn the hearing aids off and on again. Open and close the battery compartments. If your hearing aids do not have a battery compartment, turn them on and off as described in the hearing aids' user guide



- 2 Hold both hearing aids close to the transmitter. The pairing process starts automatically. The LEDs will turn blue for 30 seconds, indicating that they're pairing.



- 3 Once pairing has been completed successfully, insert the hearing aids into your ears.



- 4 A medium press / hold / release of 1-3 seconds on the rocker switch of the hearing aids will initiate TV streaming.



- 5 If your audiologist gave you a TV programme, you can initiate streaming by switching to the TV programme using the Signia app, Mini Pocket remote control, and /or on-board user controls (e.g. rocker switch).

Intuitive LED Display

Effortless handling: The intuitive LED display provides a clear overview of Streamline TV's connection status

White power display: Streamline TV is starting.



Both displays flash blue: Streamline TV is switched on but not paired with any hearing aids.



Both displays turn blue for approx. 30 seconds: Pairing is complete.



Green power display and blue status display:

Streamline TV is connected to another electronic device (whether or not an audio signal is being transmitted)



Red power display:

Streamline TV is switched on but not receiving an audio signal



ReSound

Set up instructions for Resound Multi Mic

- 1 Always fully charge the Multi Mic before using.
Turn on the Multi Mic by pushing and holding the power button until the status light blinks green.
Connect your hearing aids to the Multi Mic by pushing and holding the program button/toggle button on your hearing aid until you hear a melody.
Check the connection by blowing or tapping on the Multi Mic.
This sound should be audible in your hearing aid. If this is not the case, see trouble shooting guide on the reverse page.
To exit the Multi Mic streaming program push the program button/toggle button on your hearing aids. Your hearing aid will return to the most recent hearing aid program indicated by one or more beeps.
Turn off the Multi Mic by pushing and holding down the power button until status light turns red and then off.

- 2 **POWERING**
Insert the charger in the micro USB plug on the side of Multi Mic to give power.



Status light indications when charging:

Power/Charging	Charging	Charged
Powered OFF		
Powered ON		



Status light ON



Status light OFF



- 3 When connecting either a mini-jack cable or an FM receiver to the Multi Mic, the corresponding mode will automatically be selected if the unit is turned on.
These modes (Line-in and FM) can only be selected if either a mini-jack cable or a FM receiver is connected to them.



PHONAK

Don't have a Phonak Receiver or Signia Receiver but have telecoil in your aid?

- 1 Fully charge Roger NeckLoop before using it the first time. Plug the smaller end (USB C) of the charging cable into your Roger NeckLoop. Plug the larger end (USB A) of the charging cable into the external power supply. Plug the external power supply into an easily accessible power socket. With the supplied charger, Roger NeckLoop is:
 - 80% charged after 1 hour
 - 100% charged after 3 hours
 Once fully charged, Roger NeckLoop can be used for 10 hours or more.



- 2 Attach one end of the inductive neck loop in the socket on top of the Roger NeckLoop. Place the loop around your neck and attach the other end of the loop to the other socket.



- 3 Connecting to a Multimedia Hub. Turn on your Multimedia Hub. Switch your hearing aid/sound processor to the T-coil program. Hold Roger NeckLoop within 10 cm of the Hub, press the large Connect button on the Multimedia Hub. Repeat connection for additional receivers. Successful connection is indicated in the display.



- 4 To adjust the volume to a comfortable level use the volume buttons on the side of the Neckloop body.

